

JELD-WEN®

CASEMENT | AWNING | FIXED | COMBINATIONS

JWC8500 VINYL WINDOWS

ARCHITECTURAL SPEC SHEET | June 2024

THANK YOU FOR YOUR INTEREST IN JELD-WEN CANADA.

Included in this guide are standard product designs that are focused on our innovative JWC8500 vinyl series windows. These designs are not the only products JELD-WEN Canada can manufacture. The majority of our architectural projects are custom in nature, which provides you confidence that JELD-WEN Canada can manufacture the unique design that sets your project apart.

With our continued commitment to innovate, manufacture, and distribute an extensive range of interior and exterior doors; wood and vinyl windows; and related products, with energy efficiency at the forefront, JELD-WEN Canada leaves its mark in every community it works in.

With this privilege comes great responsibility. We bring beauty and security to the spaces that touch our lives, and we ensure that the professionals who design, engineer, and construct those homes and other buildings have access to JELD-WEN® products that can be trusted to perform every time. Our vision is to continue to lead the global building products industry with great people, creating superior products and delivering excellence in all that we do.

Visit [JELD-WEN.ca](https://www.jeld-wen.ca) for the latest product information and updates.

The JELD-WEN Canada Team

TABLE OF CONTENTS

SIZING DETAILS

OPENINGS, MATERIALS, FRAME & SASH. 4

PRODUCT INFORMATION

WINDOW STYLES, GRILLS & COLOUR OPTIONS. 6

GLAZING, LOW-E & WEATHERSTRIPPING. 8

HARDWARE & SCREENS. 10

SECTION DETAILS

ASSEMBLIES & EXTENSIONS. 11

PERFORMANCE

INSTALLATION, ACOUSTIC & PERFORMANCE. 15

SIZING DETAILS:

OPENINGS, MATERIALS, FRAME & SASH

TYPES OF OPENINGS

Casement, awning, fixed and combinations.

Maximum sizes:

- Casement; 36 X 78.
- Awning; 36X 72 or 50 X 48.
- Fixed; Min: 12 X 15 or 15 X 12.
- Max: 50 sq ft in double pane and 40 sq ft in triple.
- Engineering review available.
- Weight restrictions may apply.

MATERIALS

The extruded vinyl profiles meet the performance requirements of AAMA 303, NAFS-08, NAFS-11, and NAFS-17.



FRAME

Vinyl:

- Fusion welding for increased strength and durability.
- Frame depth of 4 9/16 in (116mm).
- A closed frame version is also available.
- A continuously welded weather strip made of flexible PVC.
- A continuous weather strip at the mechanism cover.
- A continuously inserted weather strip.
- The frames have integrated adaptor to attach exterior moldings and are equipped with a integrated 1/2 in drywall adapter. A non installed 3/4 in in adapter can be added.

SASH

Vinyl:

The sash has a thickness of 1 5/8 in (nominal) or (42mm), and is assembled using fusion welding technology for increased strength and durability.

- Non-apparent keepers.
- Interior glass stops on the sash, allowing service from the inside.
- Same sash for triple glazing and double glazing, only the glass stops changes dimension.

PRODUCT INFORMATION: WINDOW STYLES, GRILLS & COLOUR OPTIONS

WINDOW STYLES

Types of openings include:
Casement, awning, fixed and combinations.



GRILLS & SDL

- Simulated divided lites (SDL) in vinyl inside and aluminum outside of 7/8 in (23 mm) and 1 1/8 in (29 mm).
- False mullions in vinyl inside and aluminum outside of 2 1/4 in (57 mm) permanently fixed on each side of the insulating glazing with or without spacer between the glass panels.
- Grilles between glass (GBG) - flat style grilles fixed between the glass panels suspended inside the empty space.

COLOUR OPTIONS

Exterior:

- Scratch and UV resistant laminate: Jet Black, Slate, Claystone, Chestnut Bronze, French Vanilla, Smoke, Sable.
- Gentek color chart (paint); delays and additional charges applicable.
- Colour development available (paint); delays and additional charges applicable.

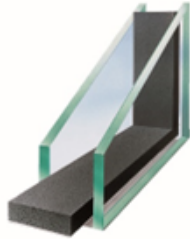
Interior:

- White (standard).

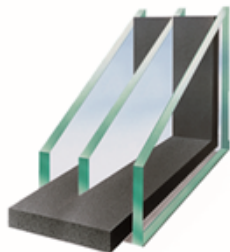
GLAZING, LOW-E & WEATHERSTRIPPING

GLAZING

All insulating glazing meets the performance requirements of IGMAC in accordance with the CAN/CGSB-12.8-97 standard.







Double glazing $\frac{3}{4}$ in (19 mm) two glass panes sealed around an insulating spacer with double sealant.



Triple glazing $1 \frac{3}{8}$ in (34mm) three glass panes sealed around two insulating spacers with triple sealant.

LOW-E

 SunFlow™	Cardinal 180	1 layer of Low-E silver offers the highest Energy Rating, SHG, and visibility. Harness the sun's energy to your indoor spaces.warm
	Guardian 80/70	
 SunStable™	Cardinal 272	2 layers of Low-E silver offer moderate SHG, U-Factor, UV protection, and visibility. A balanced solution for most climates.
	Guardian 72/57	
 SunResist™	Cardinal 366	3 layers of Low-E silver offer the lowest U-Factor and UV protection. Our most energy efficient option.
	Guardian 62/27	
 HeatSave™	Cardinal i89	Combined with other Low-E coatings to reduce U-Factor and maximize energy efficiency without sacrificing visibility.
	Guardian IS20	

WEATHERSTRIPPING

- A brush weatherstrip is applied around the entire perimeter of the opening sash. The double row of co-extruded weatherstrip meets the AAMA 701 or AAMA 702 standard.
- A continuous weatherstrip on the mechanism cover.
- A continuously weather strip on the mechanism cover.

HARDWARE & SCREENS

HARDWARE

The hardware meets the AAMA 907 standard:

- Double-dipped painted steel allowing high corrosion resistance
- Stainless steel available, ideal for the seaside

Contemporary multipoint lock with slimmed-down latch or Phantom lock integrated into the crank.

Casement/ awning operators meet the AAMA 901 standard:

- Allows 90-degree opening for easy cleaning.
- Retractable contemporary crank.
- Phantom available as an option.
- Black or white.

Permanent or detachable opening limit device (WOCD) meet the ASTM-F2090 ASTM-F2006 standard:

- Limits the opening to 4 in.
- Carbon coated steel.
- Stainless steel.

SCREENS

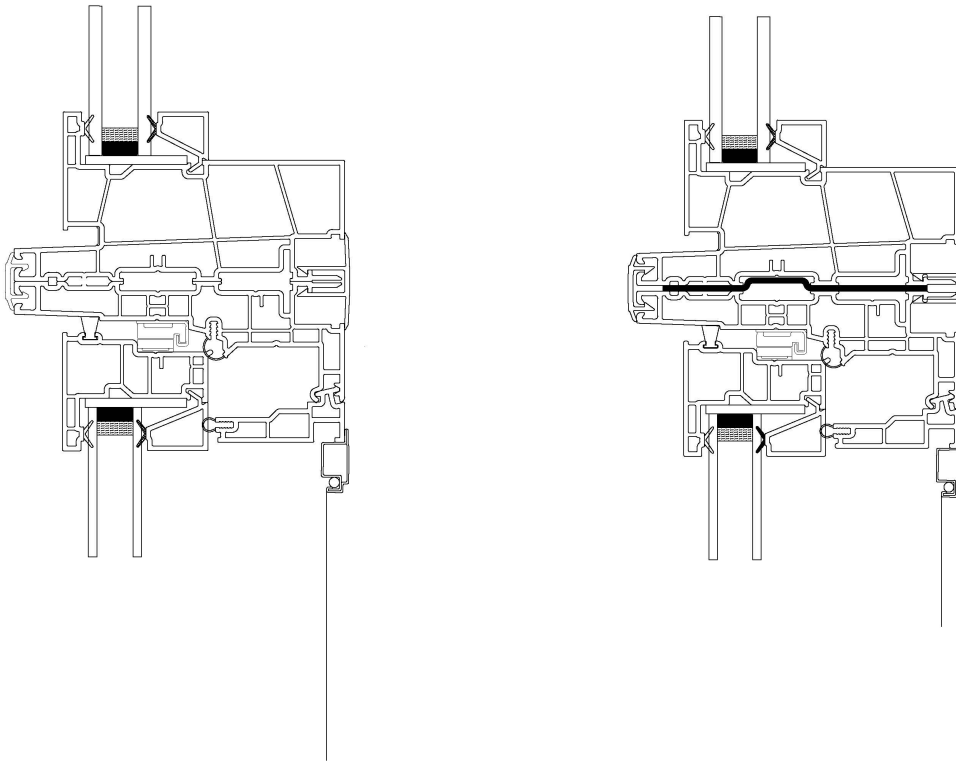
The screen fabrics are designed to let in air and light while keeping insects outside, and not to prevent a person or object from falling through an open window. The screens comply with A440-S1, ASTM1748.

- Standard screen with robust aluminum frame and 18 X16 fiberglass mesh.
- Flex Screen incorporated whitened U-channel for secure attachment without pin or corner key. Ultra-resistant fiberglass mesh.
- Better Vue available as an option, version of the Flex screen with finer mesh, optimizing air flow, visibility and natural light.

SECTION DETAILS: ASSEMBLIES & EXTENSIONS

ASSEMBLIES

- Maximum of 100 sq ft and/or 500 pounds with one side at 96 in. Site conditions to validate.
- Reinforcements of assemblies available at all times for better structural performances.



INTERIOR EXTENSION OPTIONS

An integrated J allowing the installation of your own extension on the interior surface of your window frame. It receives materials of 1/2 in (13mm) A 3/4 in (19mm) adapter available but not installed.

- Wood covered with vinyl, integrates into the 1/2 J of the window.
- Interior in jointed pine.

EXTERIOR EXTENSIONS

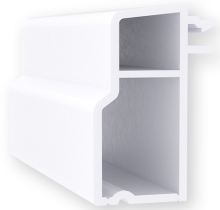
401 - Exterior finish moulding.



412 2" (51mm) open brickmould with nailing flange and integrated J.



413 - 2" (51mm) closed brickmould without nailing flange.



414 - Extension 2 3/16" (56mm) with nailing flange at 1 5/16 (33mm) and integrated J.



415 - Extension 2 5/8" (67mm).



416 - Extension 2 3/16" without nailing flange.



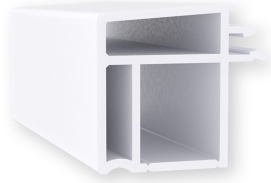
422 - 1" (25mm) closed brickmould with nailing flange.



423 - 1" (25mm) open brickmould and integrated J with nailing flange.



426 - 1" (25mm) closed brickmould without nailing flange.



427 - Extension 1 5/16" (33mm) without nailing flange.



428 - Extension 1 5/16" with nailing flange.



PERFORMANCE: INSTALLATION, ACOUSTIC & INSTALLATION

INSTALLATION

Install windows in accordance with JELD-WEN's installation method and CSA A440.4-19 or CSA A440.6-20 standard depending on the type of building. Please visit www.jeld-wen.com/resources for instructions.

ACOUSTIC VALUES

Complete products tested for acoustic value STC/OITC according to ASTM E90-09 standard. Values from 30 to 39 See 'Acoustic Values' file for more details.

ENERGY PERFORMANCE

NFRC certified - classified and labeled in accordance with the certification program - (Classified and labeled in accordance with the NFRC certification program).

Some models certified ENERGY STAR-V5 (Canada) ENERGY STAR V7 (United States). - (Classified and labeled in accordance with the ENERGY STAR-V5 (Canada) ENERGY STAR V7 (United States) certification program).

See 'Energy Performance' file for more details.

STRUCTURAL PERFORMANCE

NAFS performance tested according to AAMA 450.

- NAFS performance table see 'Structural Performances' document for more details.

